



CATALOGUE NO. 8635.0
EMBARGOED UNTIL 11.30 A.M. 28 MARCH 1994

TOURIST ACCOMMODATION, AUSTRALIA, DECEMBER QUARTER 1993

MAIN FEATURES

DECEMBER QUARTER 1993
COMPARED WITH
DECEMBER QUARTER 1992

HOTELS, MOTELS AND GUEST HOUSES

- Rooms available increased slightly overall to 166,743 although small decreases were recorded for South Australia and Australian Capital Territory.
- Room nights occupied increased by 7.6 per cent to 8.5 million overall, with large increases being recorded of 12.9 per cent in the Northern Territory, 11.4 per cent in Tasmania, 9.8 per cent in Queensland and 8.1 per cent in New South Wales.
- The room occupancy rate overall rose from 51.8 per cent to 55.5 per cent, with four star and five star rated establishments recording increases of 6.4 percentage points and 6.9 percentage points respectively.
- Guest nights increased by 7.7 per cent to 15.0 million and the bed occupancy rate increased from 32.0 per cent to 34.2 per cent.
- Guest arrivals increased by 7.9 per cent from 6.9 million to 7.4 million while average length of stay was unchanged at 2.0 days overall, ranging from 1.7 days for two star rated establishments to 2.6 days for five star rated establishments.
- Takings from accommodation increased by 10.0 per cent from \$645.0m to \$709.5m while average takings per room night occupied increased from \$82 to \$83.
- Employment (full-time and part-time) increased by 1.7 per cent from 100,832 persons to 102,578 persons.

HOLIDAY FLATS, UNITS AND HOUSES

- The number of units, etc. available for short term letting increased by 4.4 per cent to 35,486 while unit nights occupied increased by 4.9 per cent to 1.66 million.
- The unit occupancy rate consequently increased from 50.8 per cent to 51.1 per cent.
- Unit lettings increased by 8.5 per cent to 0.31 million but average length of stay fell slightly from 5.5 days to 5.3 days.
- Accommodation takings increased by 11.0 per cent from \$92.6m to \$102.7m, while average takings per unit night occupied increased from \$58 to \$62.

CARAVAN PARKS (SHORT-TERM AND LONG-TERM)

- Capacity available increased by 0.5 per cent to 288,300 powered and unpowered sites and cabins, etc., while site nights occupied increased by 1.9 per cent to 11.2 million.
- The site occupancy rate rose from 41.8 per cent to 42.4 per cent and takings from accommodation increased by 6.0 per cent from \$102.3m to \$108.5m.

VISITOR HOSTELS

- Bed spaces available decreased by 1.7 per cent to 24,960 and guest nights decreased by 0.7 per cent to 0.99 million.
- The bed occupancy rate increased slightly from 43.1 per cent to 43.2 per cent.
- Accommodation takings increased by 1.0 per cent to \$11.7m at an average of \$12 per guest night.

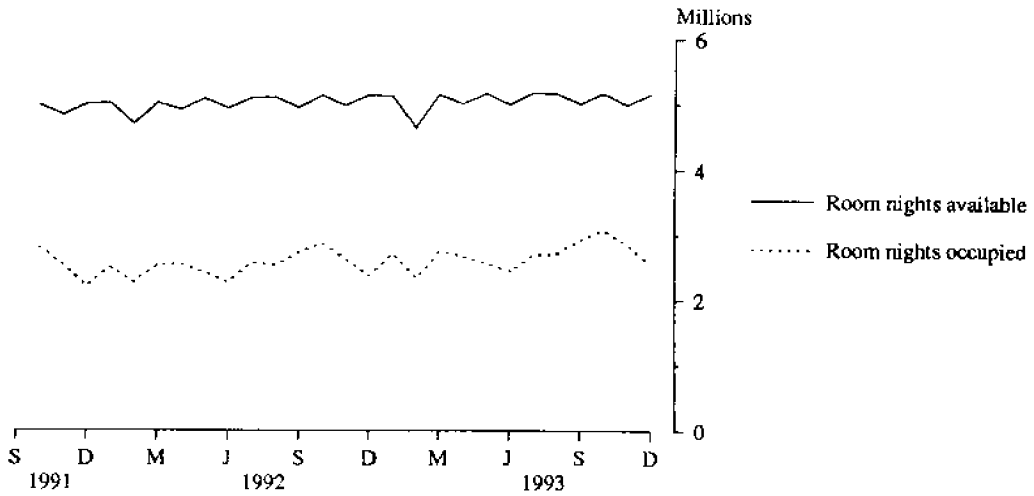
NOTE

From December quarter 1993, hotel, motel and guest house establishments with fewer than five rooms have been formally excluded from the scope of this statistical collection. This change in scope resulted in the exclusion of 95 establishments which in the September quarter 1993 Survey aggregates for Australia represented 1.9 per cent of hotel, motel and guest house establishments but accounted for only 0.2 per cent of accommodation capacity and less than 0.1 per cent of occupancy and takings.

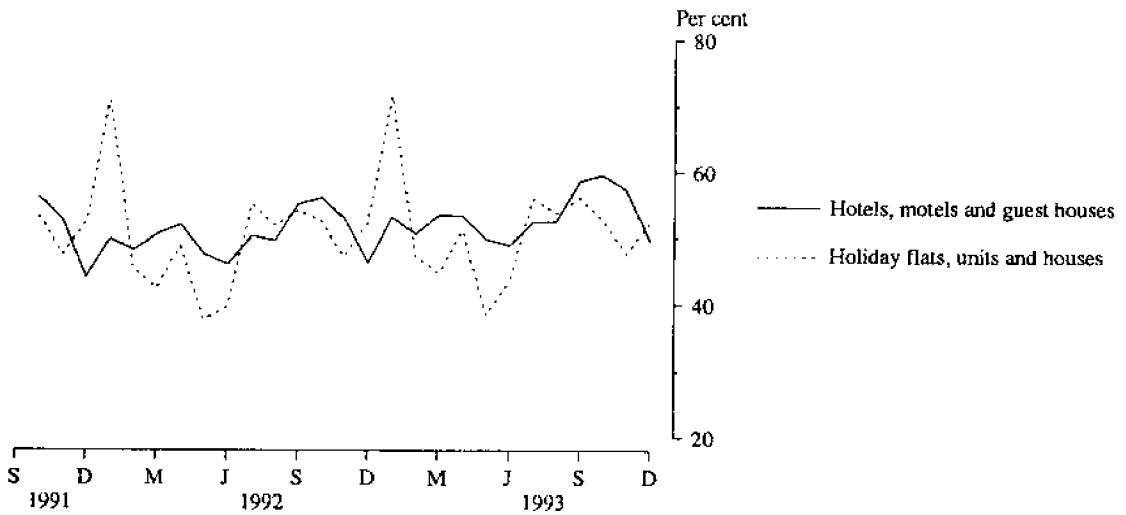
INQUIRIES

- *for further information about statistics in this publication and the availability of related unpublished statistics, contact John Alexander on Brisbane (07) 222 6215 or any ABS office.*
- *for information about other ABS statistics and services, refer to the back page of this publication.*

**MONTHLY ROOM NIGHTS AVAILABLE AND OCCUPIED:
HOTELS, MOTELS AND GUEST HOUSES,
AUSTRALIA**



**MONTHLY ROOM OCCUPANCY RATES,
AUSTRALIA**



**MONTHLY TAKINGS FROM ACCOMMODATION,
AUSTRALIA**

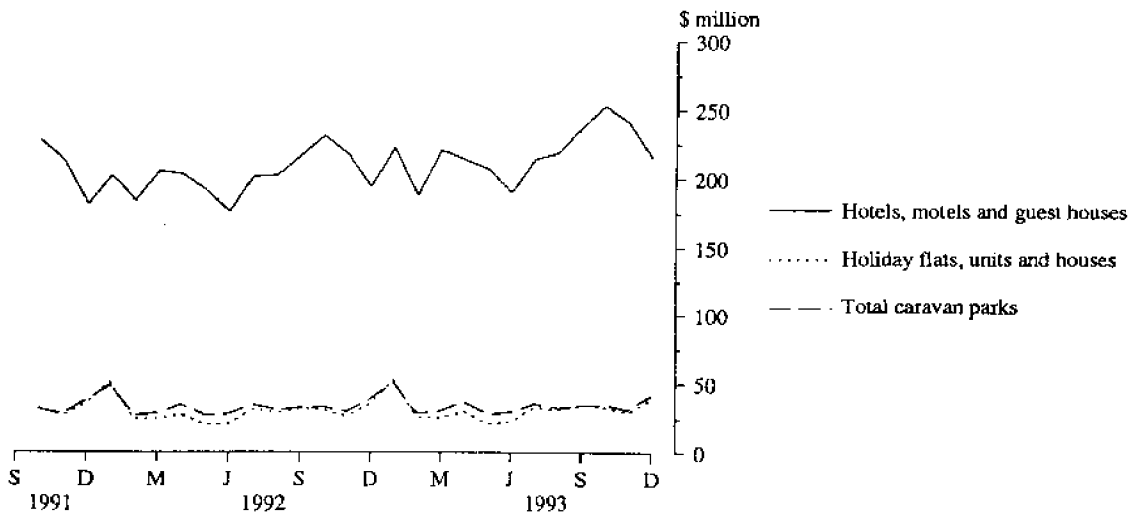


TABLE 1 — SUMMARY OF HOTELS, MOTELS AND GUEST HOUSES WITH FACILITIES, AUSTRALIA

Particulars	Unit	Quarter ended				Year ended			
		September 1992	December 1992	March 1993	June 1993	September 1993	December 1993	December 1992	December 1993
LICENSED HOTELS WITH FACILITIES									
Establishments	No.	1,185	1,187	1,183	1,196	1,185	1,138
Guest rooms	No.	64,419	64,819	65,114	66,305	66,348	66,517
Bed spaces	No.	169,575	169,734	171,024	174,671	174,935	175,476
Employment (persons)	No.	61,427	63,298	62,846	62,104	64,208	65,735
Room nights occupied	'000	3,093.5	3,261.1	3,228.5	3,151.0	3,422.0	3,725.3	12,071.0	13,526.8
Room occupancy rate	per cent	52.4	54.9	55.4	52.3	56.1	61.0	51.8	56.2
Guest nights	'000	5,190.9	5,452.8	5,415.1	5,171.1	5,695.1	6,261.5	19,979.2	22,542.8
Bed occupancy rate	per cent	33.4	35.1	35.4	32.6	35.4	39.0	32.6	35.6
Guest arrivals	'000	2,280.7	2,337.2	2,258.3	2,197.1	2,447.5	2,715.2	8,688.2	9,618.2
Average length of stay	days	2.3	2.3	2.4	2.4	2.3	2.3	2.3	2.3
Takings from accommodation	\$'000	307,807	339,658	326,653	315,612	344,815	391,787	1,234,022	1,378,868
MOTELS AND GUEST HOUSES WITH FACILITIES									
Establishments	No.	3,694	3,710	3,709	3,750	3,739	3,694
Guest rooms	No.	100,709	101,778	101,081	100,701	100,670	100,226
Bed spaces	No.	303,636	306,360	304,537	304,225	304,200	302,890
Employment (persons)	No.	37,137	37,534	37,427	36,387	37,236	36,843
Room nights occupied	'000	4,742.8	4,638.4	4,598.8	4,555.6	4,938.5	4,777.8	18,225.8	18,870.7
Room occupancy rate	per cent	51.2	49.8	50.6	49.8	53.4	51.9	49.5	51.4
Guest nights	'000	8,700.2	8,495.0	8,615.9	8,206.1	9,036.9	8,755.5	33,367.6	34,614.4
Bed occupancy rate	per cent	31.2	30.3	31.5	29.7	32.3	31.5	30.1	31.2
Guest arrivals	'000	4,681.2	4,544.6	4,481.7	4,439.2	4,858.1	4,712.8	17,831.5	18,491.8
Average length of stay	days	1.9	1.9	1.9	1.8	1.9	1.9	1.9	1.9
Takings from accommodation	\$'000	313,091	305,328	305,827	296,315	327,348	317,754	1,193,726	1,247,245
TOTAL HOTELS, MOTELS AND GUEST HOUSES WITH FACILITIES									
Establishments	No.	4,879	4,897	4,892	4,946	4,924	4,832
Guest rooms	No.	165,128	166,597	166,195	167,006	167,018	166,743
Bed spaces	No.	473,211	476,094	475,561	478,896	479,135	478,366
Employment (persons)	No.	98,564	100,832	100,273	98,491	101,444	102,578
Room nights occupied	'000	7,836.3	7,899.5	7,827.3	7,706.6	8,360.5	8,503.1	30,296.8	32,397.5
Room occupancy rate	per cent	51.7	51.8	52.5	50.8	54.5	55.5	50.4	53.3
Guest nights	'000	13,891.1	13,947.8	14,031.0	13,377.2	14,732.0	15,017.0	53,346.8	57,157.2
Bed occupancy rate	per cent	32.0	32.0	32.9	30.7	33.5	34.2	31.0	32.8
Guest arrivals	'000	6,961.8	6,881.8	6,740.0	6,636.3	7,305.6	7,428.1	26,519.7	28,110.0
Average length of stay	days	2.0	2.0	2.1	2.0	2.0	2.0	2.0	2.0
Takings from accommodation	\$'000	620,898	644,986	632,480	611,927	672,163	709,542	2,427,748	2,626,112

TABLE 2 — SUMMARY OF CARAVAN PARKS, AUSTRALIA

Particulars	Unit	Quarter ended				Year ended			
		September 1992	December 1992	March 1993	June 1993	September 1993	December 1993	December 1992	December 1993
SHORT-TERM CARAVAN PARKS									
Establishments	No.	1,588	1,552	1,547	1,552	1,609	1,621
Capacity									
On-site vans	No.	9,423	9,068	8,675	8,615	8,828	8,856
Other powered sites	No.	112,846	111,341	111,499	112,098	118,312	118,829
Unpowered sites	No.	54,047	52,942	52,087	51,814	52,310	52,415
Cabins, etc.	No.	8,272	8,213	8,359	8,549	8,669	8,834
<i>Total capacity</i>	<i>No.</i>	<i>184,588</i>	<i>181,564</i>	<i>180,620</i>	<i>181,076</i>	<i>188,119</i>	<i>188,934</i>
Sites occupied by long-term guests	No.	8,634	7,863	7,913	8,265	9,365	9,262
Other sites permanently reserved (a)	No.	35,200	35,547	37,309	36,952	40,539	41,330
Employment (persons)	No.	5,513	5,655	5,526	5,427	5,563	5,867
Site nights occupied (a)	'000	6,189.8	6,023.6	6,615.5	6,043.6	6,741.8	6,709.4	(a)	26,110.3
Site occupancy rate (a)	per cent	36.5	36.2	40.7	36.7	39.0	38.8	(a)	38.8
Takings from accommodation	\$'000	51,691	55,023	62,977	49,384	55,807	61,678	217,859	229,846
LONG-TERM CARAVAN PARKS									
Establishments	No.	1,096	1,130	1,134	1,129	1,086	1,083
Capacity									
On-site vans	No.	11,827	12,167	12,253	12,202	12,070	12,103
Other powered sites	No.	68,369	69,707	70,051	69,838	64,695	64,271
Unpowered sites	No.	16,964	17,480	17,635	17,561	16,888	16,855
Cabins, etc.	No.	5,434	5,816	5,901	5,996	6,094	6,137
<i>Total capacity</i>	<i>No.</i>	<i>102,594</i>	<i>105,170</i>	<i>105,840</i>	<i>105,597</i>	<i>99,747</i>	<i>99,366</i>
Sites occupied by long-term guests	No.	40,071	39,696	40,007	39,660	38,687	38,065
Other sites permanently reserved (a)	No.	5,566	5,803	5,721	5,575	2,255	2,474
Employment (persons)	No.	3,825	3,949	3,962	3,906	3,777	3,827
Site nights occupied (a)	'000	5,045.7	4,960.6	4,909.2	4,925.7	4,700.6	4,486.9	(a)	19,022.4
Site occupancy rate (a)	per cent	53.5	51.3	51.6	51.3	51.2	49.1	(a)	50.8
Takings from accommodation	\$'000	47,102	47,313	47,990	47,587	48,567	46,827	178,641	190,970
TOTAL CARAVAN PARKS									
Establishments	No.	2,684	2,682	2,681	2,681	2,695	2,704
Capacity									
On-site vans	No.	21,250	21,235	20,928	20,817	20,898	20,959
Other powered sites	No.	181,215	181,048	181,550	181,936	183,007	183,100
Unpowered sites	No.	71,011	70,422	69,722	69,375	69,198	69,270
Cabins, etc.	No.	13,706	14,029	14,260	14,545	14,763	14,971
<i>Total capacity</i>	<i>No.</i>	<i>287,182</i>	<i>286,734</i>	<i>286,460</i>	<i>286,673</i>	<i>287,866</i>	<i>288,300</i>
Sites occupied by long-term guests	No.	48,705	47,559	47,920	47,925	48,052	47,327
Other sites permanently reserved (a)	No.	40,766	41,350	43,030	42,527	42,794	43,804
Employment (persons)	No.	9,338	9,604	9,488	9,333	9,340	9,694
Site nights occupied (a)	'000	11,235.5	10,984.2	11,524.6	10,969.3	11,442.4	11,196.3	(a)	45,132.6
Site occupancy rate (a)	per cent	42.5	41.8	44.7	42.1	43.2	42.4	(a)	43.1
Takings from accommodation	\$'000	98,793	102,335	110,967	96,971	104,374	108,504	396,500	420,816

(a) From September quarter 1992, caravan park sites etc. permanently reserved but only casually occupied by their tenants have been recorded continuously as site nights occupied irrespective of whether the tenants of individual sites were in residence on any particular night. See Explanatory Notes 11 and 14. Occupancy measures from September quarter 1992 are not therefore comparable with those from previous quarters.

TABLE 3 — SUMMARY OF HOLIDAY FLATS, UNITS AND HOUSES, AUSTRALIA

Particulars	Unit	Quarter ended				Year ended			
		September 1992	December 1992	March 1993	June 1993	September 1993	December 1993	December 1992	December 1993
Letting entities	No.	1,424	1,425	1,446	1,440	1,453	1,493
Flats, units and houses									
Single bedroom	No.	7,696	7,712	7,773	7,665	7,733	7,986
Multiple bedroom	No.	25,536	26,263	26,548	26,110	26,726	27,500
<i>Total flats, units and houses</i>	<i>No.</i>	<i>33,232</i>	<i>33,975</i>	<i>34,321</i>	<i>33,775</i>	<i>34,459</i>	<i>35,486</i>	<i>..</i>	<i>..</i>
Bed spaces	No.	143,128	146,605	148,464	146,251	148,721	154,103
Employment (persons) (a)	No.	4,810	4,857	4,855	4,788	4,868	5,155
Unit nights occupied	'000	1,642.1	1,586.0	1,690.3	1,362.1	1,750.8	1,663.6	6,128.7	6,466.8
Unit occupancy rate	per cent	53.7	50.8	54.8	44.3	55.3	51.1	49.9	51.4
Unit lettings	'000	273.7	288.3	290.4	256.4	293.2	312.9	1,082.7	1,152.9
Average length of stay	days	6.0	5.5	5.8	5.3	6.0	5.3	5.7	5.6
Takings from accommodation	\$'000	92,588	92,538	105,561	75,462	99,577	102,697	356,555	383,297

(a) Employment numbers exclude real estate agents and their employees.

TABLE 4 — SUMMARY OF VISITOR HOSTELS, AUSTRALIA

Particulars	Unit	Quarter ended				Year ended			
		September 1992	December 1992	March 1993	June 1993	September 1993	December 1993	December 1992	December 1993
Establishments	No.	392	405	404	397	410	414
Bed spaces	No.	24,411	25,404	24,943	24,680	24,681	24,960
Employment (persons)	No.	1,453	1,497	1,480	1,462	1,487	1,508
Guest nights	'000	975.2	996.5	1,000.2	881.8	994.9	989.3	3,920.3	3,866.3
Bed occupancy rate	per cent	43.7	43.1	44.8	39.3	43.9	43.2	43.6	42.8
Guest arrivals	'000	359.3	358.1	364.1	335.1	376.5	364.3	1,464.5	1,440.0
Average length of stay	days	2.7	2.8	2.7	2.6	2.6	2.7	2.7	2.7
Takings from accommodation	\$'000	11,226	11,578	11,497	10,479	11,511	11,694	44,926	45,182

TABLE 5 — HOTELS, MOTELS AND GUEST HOUSES WITH FACILITIES BY STAR GRADING
AUSTRALIA

Particulars	Licensed hotels with facilities	Motels and guest houses	Star grading					Ungraded	Total
			1	2	3	4	5		
ESTABLISHMENTS, CAPACITY AND EMPLOYMENT									
<i>December quarter 1992—</i>									
Establishments	1,187	3,710	146	1,844	1,917	263	59	668	4,897
Guest rooms	64,819	101,778	2,099	39,132	64,249	28,103	18,291	14,723	166,597
Bed spaces	169,734	306,360	5,374	113,761	190,729	81,373	43,582	41,275	476,094
Employment (persons)	63,298	37,534	1,412	17,860	28,508	20,615	23,098	9,339	100,832
<i>December quarter 1993—</i>									
Establishments	1,138	3,694	119	1,777	1,962	299	61	614	4,832
Guest rooms	66,517	100,226	1,851	37,633	65,750	30,281	18,144	13,084	166,743
Bed spaces	175,476	302,890	4,804	109,868	195,935	86,931	43,931	36,897	478,366
Employment (persons)	65,735	36,843	1,223	17,223	29,435	24,050	22,239	8,408	102,578
ROOM NIGHTS OCCUPIED ('000)									
<i>December quarter 1992</i>	3,261.1	4,638.4	65.8	1,536.9	3,115.7	1,593.7	1,092.5	494.9	7,899.5
<i>1993—</i>									
October	1,304.5	1,776.2	22.6	561.1	1,250.8	663.1	409.4	173.8	3,080.7
November	1,285.6	1,571.3	19.4	486.1	1,116.1	656.7	420.0	158.5	2,856.8
December	1,135.3	1,430.3	19.0	453.5	999.3	580.4	369.0	144.4	2,565.6
<i>December quarter 1993</i>	3,725.3	4,777.8	60.9	1,500.6	3,366.2	1,900.3	1,198.5	476.7	8,503.1
ROOM OCCUPANCY RATES (per cent)									
<i>December quarter 1992</i>	54.9	49.8	34.1	42.8	52.8	61.8	64.9	37.8	51.8
<i>1993—</i>									
October	63.3	57.2	39.3	48.1	61.4	70.6	72.8	43.0	59.6
November	64.7	52.4	34.9	43.4	56.7	72.3	77.2	40.5	57.3
December	55.2	46.1	33.1	39.1	49.1	61.8	65.6	35.7	49.7
<i>December quarter 1993</i>	61.0	51.9	35.8	43.6	55.7	68.2	71.8	39.7	55.5
GUEST NIGHTS ('000)									
<i>December quarter 1992</i>	5,452.8	8,495.0	109.5	2,774.1	5,667.5	2,745.7	1,776.8	874.1	13,947.8
<i>1993—</i>									
October	2,179.1	3,261.8	37.3	1,010.0	2,263.6	1,151.4	672.8	305.8	5,440.9
November	2,072.2	2,720.5	31.5	827.4	1,915.1	1,074.7	677.0	266.9	4,792.6
December	2,010.2	2,773.2	32.5	849.8	1,921.8	1,066.7	649.4	263.2	4,783.5
<i>December quarter 1993</i>	6,261.5	8,755.5	101.3	2,687.3	6,100.5	3,292.8	1,999.2	835.9	15,017.0
BED OCCUPANCY RATES (per cent)									
<i>December quarter 1992</i>	35.1	30.3	22.2	26.6	32.4	36.7	44.3	23.7	32.0
<i>1993—</i>									
October	40.1	34.8	25.0	29.7	37.3	42.7	49.4	26.8	36.7
November	39.7	30.0	21.8	25.5	32.6	41.2	51.4	24.2	33.5
December	37.2	29.6	21.8	25.2	31.7	39.6	47.7	23.1	32.4
<i>December quarter 1993</i>	39.0	31.5	22.9	26.8	33.9	41.2	49.5	24.7	34.2
GUEST ARRIVALS ('000)									
<i>December quarter 1992</i>	2,337.2	4,544.6	62.5	1,588.9	2,987.3	1,159.5	689.2	394.3	6,881.8
<i>1993—</i>									
October	938.0	1,755.5	19.3	584.5	1,201.8	488.8	256.8	142.3	2,693.5
November	904.9	1,463.1	15.3	475.0	1,020.0	468.2	262.6	126.9	2,368.0
December	872.4	1,494.2	16.8	494.2	1,018.6	463.4	251.6	121.9	2,366.6
<i>December quarter 1993</i>	2,715.2	4,712.8	51.5	1,553.8	3,240.3	1,420.4	771.0	391.1	7,428.1
AVERAGE LENGTH OF STAY (days)									
<i>December quarter 1992</i>	2.3	1.9	1.8	1.7	1.9	2.4	2.6	2.2	2.0
<i>December quarter 1993</i>	2.3	1.9	2.0	1.7	1.9	2.3	2.6	2.1	2.0
TAKINGS FROM ACCOMMODATION (\$'000)									
<i>December quarter 1992</i>	339,658	305,328	2,595	75,684	211,216	163,786	155,862	35,842	644,986
<i>1993—</i>									
October	135,843	117,090	906	27,521	85,614	68,198	58,725	11,969	252,932
November	136,901	104,081	773	23,481	76,204	67,773	61,704	11,047	240,982
December	119,044	96,584	808	22,622	69,597	59,026	53,306	10,268	215,627
<i>December quarter 1993</i>	391,787	317,754	2,487	73,623	231,414	194,997	173,735	33,284	709,542

TABLE 5 — HOTELS, MOTELS AND GUEST HOUSES WITH FACILITIES BY STAR GRADING—*continued*
NEW SOUTH WALES

Particulars	Licensed hotels with facilities	Motels and guest houses	Star grading					Ungraded	Total
			1	2	3	4	5		
ESTABLISHMENTS, CAPACITY AND EMPLOYMENT									
<i>December quarter 1992—</i>									
Establishments	277	1,461	43	609	731	110	19	226	1,738
Guest rooms	17,770	39,675	680	13,182	21,463	10,585	6,161	5,374	57,445
Bed spaces	44,689	119,834	1,750	39,550	64,450	30,522	13,530	14,721	164,523
Employment (persons)	15,034	15,018	344	4,868	8,434	7,238	6,118	3,050	30,052
<i>December quarter 1993—</i>									
Establishments	267	1,459	38	559	741	123	19	246	1,726
Guest rooms	18,512	38,389	561	11,312	21,820	11,712	5,726	5,770	56,901
Bed spaces	46,916	117,847	1,433	35,148	65,815	33,462	12,707	16,198	164,763
Employment (persons)	16,038	14,528	281	4,391	8,552	8,450	5,725	3,167	30,566
ROOM NIGHTS OCCUPIED ('000)									
<i>December quarter 1992</i>	864.6	1,792.7	25.5	530.6	1,023.9	571.9	347.7	157.7	2,657.3
<i>1993—</i>									
October	352.9	691.4	8.2	172.3	420.6	248.4	122.3	72.5	1,044.2
November	360.1	597.3	6.9	144.7	360.2	247.7	129.2	68.8	957.5
December	312.8	557.2	6.8	137.0	331.8	225.5	107.9	61.1	870.1
<i>December quarter 1993</i>	1,025.8	1,846.0	21.8	453.9	1,112.5	721.6	359.5	202.4	2,871.8
ROOM OCCUPANCY RATES (per cent)									
<i>December quarter 1992</i>	53.1	49.6	40.8	43.8	52.0	59.0	61.4	33.8	50.7
<i>1993—</i>									
October	61.5	58.1	46.9	49.2	62.2	68.4	68.9	40.6	59.2
November	65.7	52.1	40.8	43.8	55.2	70.5	75.2	39.9	56.5
December	55.1	47.0	39.0	39.9	49.1	62.1	60.8	34.4	49.6
<i>December quarter 1993</i>	60.7	52.4	42.3	44.3	55.5	67.0	68.2	38.3	55.1
GUEST NIGHTS ('000)									
<i>December quarter 1992</i>	1,398.5	3,346.9	42.8	983.7	1,907.1	993.5	557.2	261.0	4,745.4
<i>1993—</i>									
October	574.7	1,301.2	13.8	324.1	781.0	435.8	200.6	120.7	1,876.0
November	577.3	1,046.6	11.2	253.3	625.0	400.6	224.0	109.9	1,624.0
December	531.4	1,091.3	11.5	263.5	643.7	413.5	186.5	104.0	1,622.6
<i>December quarter 1993</i>	1,683.4	3,439.1	36.4	840.8	2,049.7	1,250.0	611.1	334.6	5,122.6
BED OCCUPANCY RATES (per cent)									
<i>December quarter 1992</i>	34.1	30.6	26.6	27.1	32.3	35.6	44.8	20.1	31.6
<i>1993—</i>									
October	39.5	35.6	31.0	29.8	38.3	42.0	50.9	24.1	36.7
November	42.4	29.7	26.0	25.2	31.7	39.9	58.8	22.7	33.2
December	37.5	29.9	26.0	25.1	31.6	39.9	47.3	20.8	32.1
<i>December quarter 1993</i>	39.7	31.8	27.6	26.8	33.9	40.6	52.3	22.5	34.0
GUEST ARRIVALS ('000)									
<i>December quarter 1992</i>	653.5	1,940.7	23.5	603.5	1,118.5	447.5	240.7	160.4	2,594.2
<i>1993—</i>									
October	269.1	747.0	7.5	204.1	459.0	197.9	77.5	70.1	1,016.2
November	269.6	594.5	5.6	157.8	369.2	185.1	85.0	61.3	864.1
December	252.3	624.6	6.0	167.0	382.5	188.3	74.1	59.1	876.9
<i>December quarter 1993</i>	791.0	1,966.2	19.1	528.9	1,210.7	571.3	236.7	190.5	2,757.2
AVERAGE LENGTH OF STAY (days)									
<i>December quarter 1992</i>	2.1	1.7	1.8	1.6	1.7	2.2	2.3	1.6	1.8
<i>December quarter 1993</i>	2.1	1.7	1.9	1.6	1.7	2.2	2.6	1.8	1.9
TAKINGS FROM ACCOMMODATION (\$'000)									
<i>December quarter 1992</i>	98,071	124,615	1,003	27,877	68,472	58,624	54,466	12,243	222,686
<i>1993—</i>									
October	39,006	48,113	338	8,691	28,543	25,613	18,512	5,422	87,119
November	40,515	41,553	290	7,136	24,101	25,334	19,914	5,293	82,068
December	33,961	40,413	297	7,165	23,229	22,779	16,261	4,643	74,374
<i>December quarter 1993</i>	113,482	130,079	926	22,992	75,872	73,726	54,687	15,358	243,561

TABLE 5 — HOTELS, MOTELS AND GUEST HOUSES WITH FACILITIES BY STAR GRADING—*continued*
VICTORIA

Particulars	Licensed hotels with facilities	Motels and guest houses	Star grading					Ungraded	Total
			1	2	3	4	5		
ESTABLISHMENTS, CAPACITY AND EMPLOYMENT									
<i>December quarter 1992—</i>									
Establishments	210	829	35	401	439	57	7	100	1,039
Guest rooms	9,637	20,358	340	7,594	11,921	5,568	2,413	2,159	29,995
Bed spaces	22,990	59,452	870	21,939	34,928	13,898	4,957	5,850	82,442
Employment (persons)	9,407	7,117	320	3,672	4,517	3,874	3,093	1,048	16,524
<i>December quarter 1993—</i>									
Establishments	199	826	23	385	456	66	8	87	1,025
Guest rooms	10,279	19,986	284	7,490	12,246	5,896	2,654	1,695	30,265
Bed spaces	24,793	58,439	725	21,258	36,303	14,564	5,526	4,856	83,232
Employment (persons)	9,699	6,501	267	3,394	4,512	3,911	3,193	923	16,200
ROOM NIGHTS OCCUPIED ('000)									
<i>December quarter 1992</i>	443.1	838.7	7.6	254.7	530.9	311.9	133.1	43.7	1,281.8
<i>1993—</i>									
October	177.4	288.1	1.9	85.1	193.2	116.6	53.7	15.0	465.4
November	200.5	271.0	1.7	79.6	183.5	127.8	64.4	14.4	471.5
December	154.2	233.3	1.6	71.8	155.8	99.0	47.1	12.3	387.5
<i>December quarter 1993</i>	532.1	792.3	5.2	236.5	532.5	343.4	165.2	41.7	1,324.4
ROOM OCCUPANCY RATES (per cent)									
<i>December quarter 1992</i>	50.2	44.9	24.1	36.5	48.4	60.9	59.9	22.7	46.6
<i>1993—</i>									
October	55.7	46.5	21.3	36.6	50.9	63.8	65.3	28.5	49.6
November	65.0	45.2	19.9	35.4	49.9	72.3	80.9	28.3	51.9
December	48.4	37.6	18.0	30.9	41.0	54.2	57.2	23.3	41.3
<i>December quarter 1993</i>	56.3	43.1	19.7	34.3	47.3	63.3	67.7	26.7	47.6
GUEST NIGHTS ('000)									
<i>December quarter 1992</i>	692.0	1,456.2	12.2	461.2	920.4	479.6	199.4	75.3	2,148.2
<i>1993—</i>									
October	273.5	502.8	2.6	151.2	335.6	181.3	79.3	26.2	776.3
November	300.8	454.7	2.3	137.1	306.3	194.3	90.6	24.8	755.5
December	253.3	427.1	2.4	133.1	283.6	166.4	73.2	21.8	680.4
<i>December quarter 1993</i>	827.6	1,384.6	7.3	421.4	925.5	542.0	243.1	72.8	2,212.1
BED OCCUPANCY RATES (per cent)									
<i>December quarter 1992</i>	32.9	26.7	15.3	22.9	28.6	37.5	43.7	14.3	28.4
<i>1993—</i>									
October	35.6	27.8	11.4	22.9	29.8	40.2	46.3	17.4	30.1
November	40.4	25.9	10.6	21.5	28.1	44.5	54.7	17.0	30.3
December	33.0	23.6	10.6	20.2	25.2	36.8	42.7	14.5	26.4
<i>December quarter 1993</i>	36.3	25.8	10.9	21.5	27.7	40.5	47.8	16.3	28.9
GUEST ARRIVALS ('000)									
<i>December quarter 1992</i>	341.0	854.2	8.3	283.2	554.5	223.0	93.7	32.4	1,195.2
<i>1993—</i>									
October	131.4	302.2	1.5	93.7	203.8	82.8	38.3	13.4	433.7
November	135.0	273.3	1.4	84.6	184.2	85.2	39.9	12.9	408.3
December	126.7	258.9	1.6	83.9	173.0	80.0	35.7	11.4	385.6
<i>December quarter 1993</i>	393.2	834.4	4.6	262.2	561.0	248.1	113.9	37.8	1,227.6
AVERAGE LENGTH OF STAY (days)									
<i>December quarter 1992</i>	2.0	1.7	1.5	1.6	1.7	2.2	2.1	2.3	1.8
<i>December quarter 1993</i>	2.1	1.7	1.6	1.6	1.6	2.2	2.1	1.9	1.8
TAKINGS FROM ACCOMMODATION (\$'000)									
<i>December quarter 1992</i>	50,080	56,418	306	12,963	35,943	33,898	20,341	3,047	106,498
<i>1993—</i>									
October	19,446	18,939	58	4,249	12,698	12,480	7,874	1,025	38,384
November	22,752	18,034	55	3,949	12,194	13,823	9,814	951	40,786
December	15,914	15,417	56	3,589	10,334	10,006	6,515	831	31,331
<i>December quarter 1993</i>	58,112	52,390	169	11,788	35,226	36,309	24,203	2,808	110,502

TABLE 5 — HOTELS, MOTELS AND GUEST HOUSES WITH FACILITIES BY STAR GRADING—*continued*
QUEENSLAND

Particulars	Licensed hotels with facilities	Motels and guest houses	Star grading					Ungraded	Total
			1	2	3	4	5		
ESTABLISHMENTS, CAPACITY AND EMPLOYMENT									
<i>December quarter 1992—</i>									
Establishments	281	833	31	463	380	47	17	176	1,114
Guest rooms	17,670	22,111	475	8,718	14,287	7,288	5,199	3,814	39,781
Bed spaces	51,768	68,722	1,301	26,128	43,480	23,020	14,676	11,885	120,490
Employment (persons)	20,101	8,241	238	3,988	7,336	5,297	8,520	2,963	28,342
<i>December quarter 1993—</i>									
Establishments	262	836	20	457	393	54	18	156	1,098
Guest rooms	17,917	22,208	300	8,550	14,930	7,803	5,533	3,009	40,125
Bed spaces	53,013	68,551	867	25,681	45,489	24,956	15,746	8,825	121,564
Employment (persons)	21,104	8,417	139	3,908	7,848	6,192	9,109	2,325	29,521
ROOM NIGHTS OCCUPIED ('000)									
<i>December quarter 1992</i>	980.1	1,124.1	18.4	390.7	755.3	426.7	334.7	178.3	2,104.2
<i>1993—</i>									
October	392.3	431.0	3.5	147.4	307.2	182.0	133.9	49.2	823.3
November	367.4	385.7	3.4	128.0	280.0	168.0	131.1	42.6	753.1
December	363.2	371.1	3.8	126.5	267.5	161.7	132.3	42.6	734.3
<i>December quarter 1993</i>	1,122.9	1,187.8	10.7	401.9	854.7	511.7	397.3	134.4	2,310.7
ROOM OCCUPANCY RATES (per cent)									
<i>December quarter 1992</i>	60.6	55.3	42.2	48.7	57.5	63.6	70.0	52.2	57.6
<i>1993—</i>									
October	70.6	62.7	38.1	55.7	66.4	75.3	78.1	53.1	66.2
November	68.4	57.9	37.4	49.9	62.5	71.8	79.0	47.5	62.6
December	65.4	53.9	41.1	47.7	57.9	66.8	77.1	45.7	59.1
<i>December quarter 1993</i>	68.1	58.2	38.9	51.1	62.3	71.3	78.0	48.8	62.6
GUEST NIGHTS ('000)									
<i>December quarter 1992</i>	1,818.6	2,082.8	30.3	703.4	1,410.5	801.6	613.5	342.1	3,901.4
<i>1993—</i>									
October	723.0	799.1	5.9	265.7	565.5	349.2	244.4	91.5	1,522.2
November	648.6	684.6	5.7	221.5	496.5	308.0	224.7	76.8	1,333.2
December	715.2	747.4	6.7	245.0	539.2	327.5	259.7	84.5	1,462.6
<i>December quarter 1993</i>	2,086.8	2,231.2	18.3	732.3	1,601.2	984.6	728.8	252.8	4,318.0
BED OCCUPANCY RATES (per cent)									
<i>December quarter 1992</i>	38.5	32.9	25.3	29.3	35.3	37.9	45.4	32.3	35.3
<i>1993—</i>									
October	44.0	37.7	21.9	33.4	40.1	45.1	50.1	33.7	40.4
November	40.8	33.3	21.8	28.8	36.4	41.1	47.6	29.2	36.6
December	43.6	35.2	25.0	30.8	38.3	42.3	53.2	30.9	38.8
<i>December quarter 1993</i>	42.8	35.4	22.9	31.0	38.3	42.9	50.3	31.3	38.6
GUEST ARRIVALS ('000)									
<i>December quarter 1992</i>	616.0	986.8	16.4	376.3	629.0	282.6	181.9	116.5	1,602.7
<i>1993—</i>									
October	245.2	381.7	3.2	142.1	254.5	120.8	76.4	29.8	626.9
November	237.8	327.7	3.0	118.4	226.0	114.0	76.6	27.5	565.5
December	247.1	357.5	3.3	129.0	243.6	118.9	82.5	27.3	604.6
<i>December quarter 1993</i>	730.0	1,066.9	9.4	389.5	724.1	353.8	235.5	84.6	1,796.9
AVERAGE LENGTH OF STAY (days)									
<i>December quarter 1992</i>	3.0	2.1	1.9	1.9	2.2	2.8	3.4	2.9	2.4
<i>December quarter 1993</i>	2.9	2.1	1.9	1.9	2.2	2.8	3.1	3.0	2.4
TAKINGS FROM ACCOMMODATION (\$'000)									
<i>December quarter 1992</i>	108,343	68,229	793	17,117	52,928	43,713	48,595	13,425	176,572
<i>1993—</i>									
October	44,399	26,786	181	6,592	21,989	18,510	20,460	3,452	71,185
November	41,403	23,724	182	5,674	19,586	16,900	19,684	3,102	65,127
December	43,340	23,718	224	5,979	19,468	16,981	21,136	3,271	67,058
<i>December quarter 1993</i>	129,142	74,229	587	18,244	61,044	52,392	61,279	9,825	203,370

TABLE 5 — HOTELS, MOTELS AND GUEST HOUSES WITH FACILITIES BY STAR GRADING—*continued*
SOUTH AUSTRALIA

Particulars	Licensed hotels with facilities	Motels and guest houses	Star grading					Ungraded	Total
			1	2	3	4	5		
ESTABLISHMENTS, CAPACITY AND EMPLOYMENT									
<i>December quarter 1992—</i>									
Establishments	125	242	17	156	138	16	3	37	367
Guest rooms	4,573	6,190	201	3,302	4,759	1,068	1,083	350	10,763
Bed spaces	11,178	19,023	428	9,285	14,049	3,367	2,166	906	30,201
Employment (persons)	5,213	2,498	260	2,264	2,640	877	1,010	660	7,711
<i>December quarter 1993—</i>									
Establishments	114	228	13	148	137	17	3	24	342
Guest rooms	4,479	6,171	179	3,314	4,670	1,111	1,083	293	10,650
Bed spaces	10,929	18,935	370	9,348	13,818	3,408	2,166	754	29,864
Employment (persons)	5,134	2,490	241	2,137	2,583	1,030	1,058	575	7,624
ROOM NIGHTS OCCUPIED ('000)									
<i>December quarter 1992</i>	202.3	270.6	3.5	112.6	223.0	63.5	59.7	10.5	472.9
<i>1993—</i>									
October	78.4	106.5	1.5	44.9	85.8	25.0	24.1	3.5	184.9
November	75.9	96.8	1.2	38.1	79.3	26.1	24.5	3.6	172.8
December	55.6	79.3	1.0	33.8	61.5	19.9	16.0	2.8	134.9
<i>December quarter 1993</i>	210.0	282.7	3.7	116.8	226.6	71.0	64.6	9.9	492.6
ROOM OCCUPANCY RATES (per cent)									
<i>December quarter 1992</i>	48.1	47.5	19.1	37.1	50.9	64.6	59.9	33.4	47.8
<i>1993—</i>									
October	56.5	55.7	27.3	43.8	59.3	72.6	71.8	38.4	56.0
November	56.5	52.3	23.0	38.3	56.6	78.2	75.5	40.9	54.1
December	40.1	41.5	17.5	32.9	42.6	57.8	47.5	31.3	40.9
<i>December quarter 1993</i>	51.0	49.8	22.6	38.3	52.8	69.4	64.8	36.8	50.3
GUEST NIGHTS ('000)									
<i>December quarter 1992</i>	312.4	485.7	4.8	202.9	385.3	104.7	83.3	17.0	798.1
<i>1993—</i>									
October	121.3	189.7	2.0	78.7	150.9	40.3	34.2	4.8	311.0
November	112.2	162.3	1.7	62.6	130.5	40.2	34.5	4.9	274.5
December	88.6	150.5	1.3	61.6	114.8	34.1	23.4	3.9	239.1
<i>December quarter 1993</i>	322.0	502.5	5.0	202.8	396.3	114.6	92.1	13.7	824.5
BED OCCUPANCY RATES (per cent)									
<i>December quarter 1992</i>	30.4	27.8	12.2	23.8	29.8	33.8	41.8	20.9	28.7
<i>1993—</i>									
October	35.8	32.3	17.3	27.2	35.2	38.2	50.9	20.6	33.6
November	34.2	28.6	15.2	22.3	31.5	39.3	53.1	21.8	30.6
December	26.2	25.6	11.2	21.2	26.8	32.2	34.9	16.8	25.8
<i>December quarter 1993</i>	32.0	28.9	14.6	23.6	31.2	36.6	46.2	19.7	30.0
GUEST ARRIVALS ('000)									
<i>December quarter 1992</i>	148.6	264.9	2.6	118.2	207.6	39.9	36.5	8.7	413.5
<i>1993—</i>									
October	59.8	109.3	1.1	47.5	86.0	17.5	15.0	2.1	169.2
November	52.5	89.0	0.8	35.9	71.0	17.0	14.5	2.2	141.5
December	45.2	86.2	0.8	37.9	63.5	16.0	11.4	1.8	131.4
<i>December quarter 1993</i>	157.6	284.5	2.7	121.3	220.6	50.5	40.9	6.2	442.1
AVERAGE LENGTH OF STAY (days)									
<i>December quarter 1992</i>	2.1	1.8	1.8	1.7	1.9	2.6	2.3	2.0	1.9
<i>December quarter 1993</i>	2.0	1.8	1.9	1.7	1.8	2.3	2.3	2.2	1.9
TAKINGS FROM ACCOMMODATION (\$'000)									
<i>December quarter 1992</i>	18,277	17,785	90	5,326	15,397	6,514	8,122	614	36,063
<i>1993—</i>									
October	6,676	6,785	39	2,111	5,643	2,503	2,990	174	13,461
November	8,096	6,879	36	1,849	5,829	3,085	3,967	210	14,975
December	4,613	5,047	28	1,595	4,066	1,980	1,860	131	9,660
<i>December quarter 1993</i>	19,385	18,711	103	5,555	15,538	7,568	8,816	516	38,096

TABLE 5 — HOTELS, MOTELS AND GUEST HOUSES WITH FACILITIES BY STAR GRADING—continued
WESTERN AUSTRALIA

Particulars	Licensed hotels with facilities	Motels and guest houses	Star grading					Ungraded	Total
			1	2	3	4	5		
ESTABLISHMENTS, CAPACITY AND EMPLOYMENT									
<i>December quarter 1992—</i>									
Establishments	162	166	9	121	116	9	8	65	328
Guest rooms	8,082	6,552	153	3,499	5,964	962	2,245	1,811	14,634
Bed spaces	19,475	18,233	338	8,869	16,195	2,608	5,395	4,303	37,708
Employment (persons)	7,078	2,425	148	1,667	2,893	1,137	2,597	1,061	9,503
<i>December quarter 1993—</i>									
Establishments	161	167	10	125	112	9	9	63	328
Guest rooms	8,158	6,536	170	3,614	6,064	879	2,424	1,543	14,694
Bed spaces	19,803	18,199	372	9,185	16,537	2,295	6,021	3,592	38,002
Employment (persons)	7,149	2,475	152	1,812	3,076	1,189	2,460	935	9,624
ROOM NIGHTS OCCUPIED ('000)									
<i>December quarter 1992</i>	409.4	310.6	3.6	136.8	308.4	65.1	146.0	60.1	720.0
<i>1993—</i>									
October	161.6	127.6	1.9	59.2	125.4	22.5	59.2	21.0	289.2
November	146.0	104.5	1.3	48.8	106.0	22.0	55.2	17.2	250.5
December	136.3	99.5	1.4	47.6	99.2	20.1	51.9	15.5	235.7
<i>December quarter 1993</i>	443.8	331.6	4.6	155.6	330.6	64.6	166.2	53.8	775.4
ROOM OCCUPANCY RATES (per cent)									
<i>December quarter 1992</i>	55.2	51.6	25.5	42.5	56.2	73.6	70.7	36.5	53.6
<i>1993—</i>									
October	63.9	63.0	36.5	52.8	66.7	82.6	78.7	44.0	63.5
November	59.6	53.3	25.4	45.0	58.3	83.3	75.9	37.2	56.8
December	53.9	49.1	26.0	42.5	52.8	73.7	69.1	32.5	51.7
<i>December quarter 1993</i>	59.1	55.1	29.3	46.8	59.3	79.8	74.5	37.9	57.4
GUEST NIGHTS ('000)									
<i>December quarter 1992</i>	639.8	566.1	6.2	232.2	544.0	108.8	216.2	98.6	1,206.0
<i>1993—</i>									
October	257.4	235.9	3.1	100.6	227.1	35.7	91.1	35.6	493.3
November	221.3	177.1	1.9	76.6	179.8	32.8	81.7	25.6	398.5
December	230.6	189.5	2.3	82.5	191.8	33.6	85.3	24.5	420.1
<i>December quarter 1993</i>	709.3	602.5	7.3	259.8	598.8	102.1	258.2	85.7	1,311.8
BED OCCUPANCY RATES (per cent)									
<i>December quarter 1992</i>	35.8	33.8	19.8	28.5	36.5	45.4	43.6	25.2	34.8
<i>1993—</i>									
October	41.9	41.8	26.6	35.3	44.3	50.2	48.8	32.0	41.9
November	37.3	32.4	17.4	27.8	36.3	47.6	45.2	23.7	35.0
December	37.6	33.6	19.8	29.0	37.4	47.2	45.7	22.0	35.7
<i>December quarter 1993</i>	38.9	36.0	21.3	30.7	39.4	48.4	46.6	25.9	37.5
GUEST ARRIVALS ('000)									
<i>December quarter 1992</i>	274.9	227.8	3.5	114.2	216.5	40.5	93.6	34.5	502.7
<i>1993—</i>									
October	109.7	101.1	1.5	49.6	93.8	13.5	39.1	13.2	210.8
November	93.4	77.8	0.9	36.5	75.2	12.1	36.6	9.8	171.2
December	99.6	82.1	1.3	41.4	77.4	13.0	38.9	9.9	181.8
<i>December quarter 1993</i>	302.7	261.1	3.8	127.5	246.4	38.6	114.6	33.0	563.8
AVERAGE LENGTH OF STAY (days)									
<i>December quarter 1992</i>	2.3	2.5	1.8	2.0	2.5	2.7	2.3	2.9	2.4
<i>December quarter 1993</i>	2.3	2.3	1.9	2.0	2.4	2.6	2.3	2.6	2.3
TAKINGS FROM ACCOMMODATION (\$'000)									
<i>December quarter 1992</i>	33,637	18,927	141	6,620	19,302	6,064	16,329	3,507	51,964
<i>1993—</i>									
October	13,313	7,972	69	3,016	8,077	2,189	6,850	1,085	21,285
November	12,096	6,540	46	2,405	6,837	2,171	6,405	772	18,636
December	11,421	6,250	52	2,398	6,573	1,961	6,023	664	17,671
<i>December quarter 1993</i>	36,830	20,763	167	7,818	21,487	6,320	19,278	2,522	57,593

TABLE 5 — HOTELS, MOTELS AND GUEST HOUSES WITH FACILITIES BY STAR GRADING—*continued*
TASMANIA

Particulars	Licensed hotels with facilities	Motels and guest houses	Star grading			Total
			1, 2 and Ungraded	3	4 and 5	
ESTABLISHMENTS, CAPACITY AND EMPLOYMENT						
<i>December quarter 1992—</i>						
Establishments	89	86	92	67	16	175
Guest rooms	3,416	1,717	1,259	2,315	1,559	5,133
Bed spaces	9,772	5,385	3,399	7,113	4,645	15,157
Employment (persons)	3,416	668	951	1,376	1,757	4,084
<i>December quarter 1993—</i>						
Establishments	93	86	78	79	22	179
Guest rooms	3,510	1,832	1,440	2,455	1,447	5,342
Bed spaces	10,044	5,625	4,125	7,426	4,118	15,669
Employment (persons)	3,410	774	1,039	1,343	1,802	4,184
ROOM NIGHTS OCCUPIED ('000)						
<i>December quarter 1992</i>	159.5	78.7	44.1	102.9	91.3	238.2
<i>1993—</i>						
October	58.6	31.2	18.4	39.6	31.8	89.8
November	62.4	31.0	19.3	40.5	33.5	93.4
December	54.7	27.6	17.5	33.7	31.1	82.3
<i>December quarter 1993</i>	175.6	89.8	55.3	113.8	96.3	265.4
ROOM OCCUPANCY RATES (per cent)						
<i>December quarter 1992</i>	50.8	50.2	38.6	48.3	63.6	50.6
<i>1993—</i>						
October	53.8	55.0	41.3	52.0	70.8	54.2
November	59.2	56.4	44.8	55.0	77.2	58.3
December	50.3	48.5	39.1	44.3	69.3	49.7
<i>December quarter 1993</i>	54.4	53.3	41.7	50.4	72.4	54.0
GUEST NIGHTS ('000)						
<i>December quarter 1992</i>	266.0	142.7	72.7	186.3	149.7	408.7
<i>1993—</i>						
October	95.2	54.5	33.5	67.4	48.8	149.7
November	100.0	54.2	34.4	68.5	51.4	154.3
December	95.6	50.8	33.3	59.7	53.4	146.4
<i>December quarter 1993</i>	290.8	159.6	101.2	195.6	153.6	450.4
BED OCCUPANCY RATES (per cent)						
<i>December quarter 1992</i>	29.6	29.0	23.6	28.5	35.0	29.4
<i>1993—</i>						
October	30.6	31.3	26.2	29.3	38.2	30.8
November	33.2	32.1	27.8	30.7	41.6	32.8
December	30.7	29.1	26.1	25.9	41.8	30.1
<i>December quarter 1993</i>	31.5	30.8	26.7	28.6	40.5	31.2
GUEST ARRIVALS ('000)						
<i>December quarter 1992</i>	138.2	79.7	46.4	111.5	60.0	217.9
<i>1993—</i>						
October	51.5	29.9	21.2	38.4	21.8	81.3
November	56.9	31.8	22.2	40.6	25.8	88.7
December	50.6	29.1	20.4	35.4	24.0	79.7
<i>December quarter 1993</i>	158.9	90.8	63.8	114.4	71.6	249.7
AVERAGE LENGTH OF STAY (days)						
<i>December quarter 1992</i>	1.9	1.8	1.6	1.7	2.5	1.9
<i>December quarter 1993</i>	1.8	1.8	1.6	1.7	2.1	1.8
TAKINGS FROM ACCOMMODATION (\$'000)						
<i>December quarter 1992</i>	12,229	4,824	2,076	6,477	8,500	17,053
<i>1993—</i>						
October	4,488	1,833	955	2,309	3,057	6,321
November	4,672	1,812	988	2,331	3,166	6,484
December	4,206	1,650	976	1,988	2,893	5,856
<i>December quarter 1993</i>	13,366	5,294	2,918	6,627	9,115	18,661

TABLE 5 — HOTELS, MOTELS AND GUEST HOUSES WITH FACILITIES BY STAR GRADING—*continued*
NORTHERN TERRITORY

Particulars	Licensed hotels with facilities	Motels and guest houses	Star grading					Total
			1	2	3	4 and 5	Ungraded	
ESTABLISHMENTS, CAPACITY AND EMPLOYMENT								
<i>December quarter 1992—</i>								
Establishments	30	61	10	31	26	6	18	91
Guest rooms	2,005	3,204	237	1,281	2,088	1,097	506	5,209
Bed spaces	5,638	9,445	667	3,823	6,193	3,081	1,369	15,133
Employment (persons)	1,711	870	85	454	778	1,088	176	2,581
<i>December quarter 1993—</i>								
Establishments	29	63	14	38	21	5	14	92
Guest rooms	1,997	3,285	344	1,791	1,863	987	297	5,282
Bed spaces	5,626	9,483	1,017	5,113	5,433	2,711	835	15,109
Employment (persons)	1,801	1,067	126	681	856	1,047	158	2,868
ROOM NIGHTS OCCUPIED ('000)								
<i>December quarter 1992</i>	97.4	121.6	6.8	46.6	96.4	56.2	12.9	218.9
<i>1993—</i>								
October	41.9	56.9	5.4	28.6	39.2	21.5	4.1	98.8
November	36.6	49.4	4.8	23.9	35.3	18.6	3.5	86.0
December	27.5	34.9	4.3	18.1	23.8	13.1	3.1	62.4
<i>December quarter 1993</i>	106.1	141.1	14.6	70.5	98.2	53.1	10.7	247.2
ROOM OCCUPANCY RATES (per cent)								
<i>December quarter 1992</i>	52.8	41.7	31.4	39.6	51.0	55.7	27.7	46.0
<i>1993—</i>								
October	67.7	55.9	51.0	51.5	67.8	70.2	44.7	60.3
November	61.1	50.1	46.4	44.4	63.1	62.7	39.4	54.3
December	44.4	34.3	40.5	32.5	41.2	42.8	34.5	38.1
<i>December quarter 1993</i>	57.7	46.7	46.0	42.8	57.3	58.5	39.6	50.9
GUEST NIGHTS ('000)								
<i>December quarter 1992</i>	163.2	212.9	12.8	82.8	168.0	93.6	19.0	376.2
<i>1993—</i>								
October	68.3	98.1	9.9	50.2	66.1	33.8	6.4	166.4
November	58.9	79.3	8.6	38.4	57.4	28.7	5.2	138.3
December	44.4	60.4	8.2	31.1	40.5	20.4	4.7	104.9
<i>December quarter 1993</i>	171.7	237.8	26.7	119.7	163.9	83.0	16.3	409.5
BED OCCUPANCY RATES (per cent)								
<i>December quarter 1992</i>	31.2	24.8	20.9	23.5	30.0	33.0	15.2	27.2
<i>1993—</i>								
October	39.2	33.4	31.5	31.7	39.2	40.3	24.7	35.5
November	34.9	27.9	28.1	25.0	35.2	35.3	20.8	30.5
December	25.5	20.6	25.9	19.6	24.0	24.3	18.5	22.4
<i>December quarter 1993</i>	33.2	27.3	28.5	25.4	32.8	33.3	21.4	29.5
GUEST ARRIVALS ('000)								
<i>December quarter 1992</i>	71.3	96.8	8.0	37.3	74.0	37.7	11.2	168.1
<i>1993—</i>								
October	35.4	48.4	4.5	26.2	33.3	16.3	3.6	83.8
November	31.0	39.2	3.5	19.9	28.3	15.6	2.8	70.1
December	21.6	30.3	3.8	16.4	19.0	9.9	2.8	51.9
<i>December quarter 1993</i>	88.0	117.8	11.8	62.5	80.6	41.8	9.2	205.8
AVERAGE LENGTH OF STAY (days)								
<i>December quarter 1992</i>	2.3	2.2	1.6	2.2	2.3	2.5	1.7	2.2
<i>December quarter 1993</i>	2.0	2.0	2.3	1.9	2.0	2.0	1.8	2.0
TAKINGS FROM ACCOMMODATION (\$'000)								
<i>December quarter 1992</i>	9,272	7,793	256	2,429	7,270	6,213	895	17,064
<i>1993—</i>								
October	4,273	3,747	219	1,703	3,406	2,453	240	8,020
November	3,623	3,152	161	1,347	2,925	2,145	198	6,775
December	2,573	2,128	148	966	1,938	1,488	161	4,701
<i>December quarter 1993</i>	10,470	9,027	527	4,016	8,269	6,086	599	19,496

TABLE 5 — HOTELS, MOTELS AND GUEST HOUSES WITH FACILITIES BY STAR GRADING—*continued*
AUSTRALIAN CAPITAL TERRITORY

Particulars	Licensed hotels with facilities	Motels and guest houses	Star grading			Total
			1, 2 and Ungraded	3	4 and 5	
ESTABLISHMENTS, CAPACITY AND EMPLOYMENT						
<i>December quarter 1992—</i>						
Establishments	13	32	18	20	7	45
Guest rooms	1,666	1,971	1,019	1,452	1,166	3,637
Bed spaces	4,174	6,266	3,029	4,321	3,090	10,440
Employment (persons)	1,338	697	394	534	1,107	2,035
<i>December quarter 1993—</i>						
Establishments	13	29	12	23	7	42
Guest rooms	1,665	1,819	612	1,702	1,170	3,484
Bed spaces	4,352	5,811	1,867	5,114	3,182	10,163
Employment (persons)	1,400	591	203	665	1,123	1,991
ROOM NIGHTS OCCUPIED ('000)						
<i>December quarter 1992</i>						
	104.8	101.5	53.0	74.9	78.4	206.3
<i>1993—</i>						
October	41.5	43.6	13.7	39.8	31.6	85.1
November	36.6	35.5	12.1	31.5	28.6	72.1
December	31.0	27.4	8.4	26.0	23.9	58.4
<i>December quarter 1993</i>						
	109.1	106.5	34.2	97.2	84.1	215.6
ROOM OCCUPANCY RATES (per cent)						
<i>December quarter 1992</i>						
	68.8	56.7	58.0	56.6	73.1	62.3
<i>1993—</i>						
October	80.4	77.2	72.2	75.4	87.0	78.8
November	73.4	65.1	65.8	61.6	81.5	69.0
December	60.0	48.6	44.5	49.3	66.0	54.1
<i>December quarter 1993</i>						
	71.2	63.6	60.8	62.1	78.1	67.3
GUEST NIGHTS ('000)						
<i>December quarter 1992</i>						
	162.3	201.7	96.8	145.8	121.4	364.0
<i>1993—</i>						
October	65.7	80.4	26.8	69.9	49.5	146.2
November	52.9	61.6	23.3	51.1	40.2	114.6
December	51.2	56.2	19.6	48.6	39.1	107.4
<i>December quarter 1993</i>						
	169.9	198.2	69.7	169.6	128.8	368.1
BED OCCUPANCY RATES (per cent)						
<i>December quarter 1992</i>						
	42.5	35.5	35.7	36.8	42.7	38.3
<i>1993—</i>						
October	48.7	44.7	46.2	44.1	50.1	46.4
November	40.6	35.3	41.6	33.3	42.1	37.6
December	38.0	31.2	33.9	30.7	39.7	34.1
<i>December quarter 1993</i>						
	42.4	37.1	40.6	36.0	44.0	39.4
GUEST ARRIVALS ('000)						
<i>December quarter 1992</i>						
	93.8	93.7	40.8	75.7	71.0	187.5
<i>1993—</i>						
October	35.8	35.9	10.3	32.9	28.6	71.7
November	28.8	29.8	9.9	25.4	23.2	58.5
December	29.3	25.4	8.0	24.2	22.5	54.7
<i>December quarter 1993</i>						
	93.8	91.1	28.1	82.5	74.3	184.9
AVERAGE LENGTH OF STAY (days)						
<i>December quarter 1992</i>						
	1.7	2.2	2.4	1.9	1.7	1.9
<i>December quarter 1993</i>						
	1.8	2.2	2.5	2.1	1.7	2.0
TAKINGS FROM ACCOMMODATION (\$'000)						
<i>December quarter 1992</i>						
	10,350	6,737	3,391	5,426	8,269	17,087
<i>1993—</i>						
October	4,242	2,915	776	2,950	3,432	7,158
November	3,743	2,387	658	2,401	3,071	6,130
December	3,015	1,960	524	2,001	2,450	4,976
<i>December quarter 1993</i>						
	11,001	7,263	1,958	7,352	8,953	18,263

TABLE 6 — HOLIDAY FLATS, UNITS AND HOUSES BY STATE/TERRITORY, AUSTRALIA

Particulars	Australia	New South Wales	Victoria	Queensland	South Australia	Western Australia	Tasmania	Northern Territory	Australian Capital Territory
LETTING ENTITIES, CAPACITY AND EMPLOYMENT									
<i>December quarter 1992—</i>									
Letting entities	1,425	407	182	587	84	97	44	10	14
Flats, units and houses									
Single bedroom	7,712	1,970	1,006	3,354	357	523	228	142	132
Multiple bedroom	26,263	8,267	2,310	12,372	966	1,391	497	107	353
<i>Total flats, units and houses</i>	<i>33,975</i>	<i>10,237</i>	<i>3,316</i>	<i>15,726</i>	<i>1,323</i>	<i>1,914</i>	<i>725</i>	<i>249</i>	<i>485</i>
Bed spaces	146,605	46,994	14,914	63,254	6,498	8,990	3,210	999	1,746
Employment (persons) (a)	4,857	1,101	675	1,960	249	444	282	49	97
<i>December quarter 1993—</i>									
Letting entities	1,493	409	204	611	87	107	50	10	15
Flats, units and houses									
Single bedroom	7,986	1,983	1,032	3,512	360	563	257	143	136
Multiple bedroom	27,500	8,457	2,314	13,096	1,017	1,627	514	108	367
<i>Total flats, units and houses</i>	<i>35,486</i>	<i>10,440</i>	<i>3,346</i>	<i>16,608</i>	<i>1,377</i>	<i>2,190</i>	<i>771</i>	<i>251</i>	<i>503</i>
Bed spaces	154,103	48,817	15,205	66,574	6,865	10,378	3,366	1,027	1,871
Employment (persons) (a)	5,155	1,105	676	2,160	266	474	325	63	86
UNIT NIGHTS OCCUPIED ('000)									
<i>December quarter 1992</i>	<i>1,586.0</i>	<i>394.3</i>	<i>117.3</i>	<i>852.5</i>	<i>48.7</i>	<i>93.4</i>	<i>36.8</i>	<i>13.2</i>	<i>29.7</i>
<i>1993—</i>									
October	581.5	130.7	40.6	319.6	18.6	41.7	13.5	4.9	11.8
November	506.4	117.4	38.8	273.3	16.0	33.5	12.3	4.4	10.7
December	575.7	144.7	39.4	309.0	18.0	38.1	12.1	4.3	10.1
<i>December quarter 1993</i>	<i>1,663.6</i>	<i>392.8</i>	<i>118.8</i>	<i>902.0</i>	<i>52.6</i>	<i>113.2</i>	<i>38.0</i>	<i>13.7</i>	<i>32.6</i>
UNIT OCCUPANCY RATES (per cent)									
<i>December quarter 1992</i>	<i>50.8</i>	<i>41.9</i>	<i>38.5</i>	<i>59.0</i>	<i>40.0</i>	<i>53.0</i>	<i>55.1</i>	<i>57.5</i>	<i>66.8</i>
<i>1993—</i>									
October	52.9	40.5	39.3	62.1	43.6	61.4	56.6	65.0	75.5
November	47.7	37.6	39.2	54.9	38.8	50.9	53.1	60.6	71.1
December	52.4	44.8	38.4	60.0	42.4	56.1	50.8	55.9	64.6
<i>December quarter 1993</i>	<i>51.1</i>	<i>41.0</i>	<i>38.9</i>	<i>59.1</i>	<i>41.6</i>	<i>56.2</i>	<i>53.5</i>	<i>60.5</i>	<i>70.4</i>
UNIT LETTINGS ('000)									
<i>December quarter 1992</i>	<i>288.3</i>	<i>65.9</i>	<i>30.0</i>	<i>136.7</i>	<i>9.8</i>	<i>21.7</i>	<i>17.2</i>	<i>3.0</i>	<i>4.0</i>
<i>1993—</i>									
October	111.1	24.0	11.4	52.9	3.9	9.5	6.1	1.4	1.8
November	96.9	21.5	10.4	45.0	3.2	7.9	6.1	1.3	1.6
December	104.9	25.2	10.1	49.5	3.3	8.2	5.9	1.2	1.4
<i>December quarter 1993</i>	<i>312.9</i>	<i>70.7</i>	<i>32.0</i>	<i>147.5</i>	<i>10.4</i>	<i>25.6</i>	<i>18.1</i>	<i>3.8</i>	<i>4.8</i>
AVERAGE LENGTH OF STAY (days)									
<i>December quarter 1992</i>	<i>5.5</i>	<i>6.0</i>	<i>3.9</i>	<i>6.2</i>	<i>5.0</i>	<i>4.3</i>	<i>2.1</i>	<i>4.4</i>	<i>7.5</i>
<i>1993—</i>									
October	5.2	5.4	3.6	6.0	4.7	4.4	2.2	3.6	6.5
November	5.2	5.5	3.7	6.1	5.1	4.3	2.0	3.5	6.6
December	5.5	5.7	3.9	6.2	5.4	4.6	2.1	3.8	7.1
<i>December quarter 1993</i>	<i>5.3</i>	<i>5.6</i>	<i>3.7</i>	<i>6.1</i>	<i>5.1</i>	<i>4.4</i>	<i>2.1</i>	<i>3.6</i>	<i>6.7</i>
TAKINGS FROM ACCOMMODATION (\$'000)									
<i>December quarter 1992</i>	<i>92,538</i>	<i>22,541</i>	<i>8,805</i>	<i>47,736</i>	<i>2,905</i>	<i>5,064</i>	<i>2,312</i>	<i>746</i>	<i>2,429</i>
<i>1993—</i>									
October	33,834	7,005	2,949	18,121	1,108	2,491	849	348	962
November	29,337	6,359	2,903	15,063	1,030	2,035	782	323	841
December	39,526	10,085	3,032	20,893	1,151	2,389	819	301	857
<i>December quarter 1993</i>	<i>102,697</i>	<i>23,450</i>	<i>8,884</i>	<i>54,078</i>	<i>3,290</i>	<i>6,915</i>	<i>2,450</i>	<i>971</i>	<i>2,659</i>

(a) Employment numbers exclude real estate agents and their employees.

TABLE 7 — CARAVAN PARKS BY TYPE AND BY STATE/TERRITORY, AUSTRALIA

Particulars	Australia			New South Wales (a)			Victoria		
	Short-term	Long-term	Total	Short-term	Long-term	Total	Short-term	Long-term	Total
ESTABLISHMENTS, CAPACITY AND EMPLOYMENT									
<i>December quarter 1992—</i>									
Establishments	1,552	1,130	2,682	412	390	802	442	149	591
Capacity									
On-site vans	9,068	12,167	21,235	3,097	3,939	7,036	2,373	1,862	4,235
Other powered sites	111,341	69,707	181,048	36,733	26,792	63,525	35,989	8,121	44,110
Unpowered sites	52,942	17,480	70,422	14,537	6,562	21,099	12,970	1,931	14,901
Cabins, flats, etc.	8,213	5,816	14,029	2,541	1,925	4,466	2,150	690	2,840
<i>Total capacity</i>	<i>181,564</i>	<i>105,170</i>	<i>286,734</i>	<i>56,908</i>	<i>39,218</i>	<i>96,126</i>	<i>53,482</i>	<i>12,604</i>	<i>66,086</i>
Sites occupied by long-term guests	7,863	39,696	47,559	2,162	14,110	16,272	1,978	4,488	6,466
Other sites permanently reserved	35,547	5,803	41,350	17,977	3,957	21,934	13,399	477	13,876
Employment (persons)	5,655	3,949	9,604	1,677	1,383	3,060	1,464	450	1,914
<i>December quarter 1993—</i>									
Establishments	1,621	1,083	2,704	471	327	798	442	159	601
Capacity									
On-site vans	8,856	12,103	20,959	3,285	3,621	6,906	2,046	1,913	3,959
Other powered sites	118,829	64,271	183,100	42,805	20,599	63,404	36,246	8,689	44,935
Unpowered sites	52,415	16,855	69,270	16,010	4,986	20,996	13,064	2,066	15,130
Cabins, flats, etc.	8,834	6,137	14,971	2,835	1,861	4,696	2,245	908	3,153
<i>Total capacity</i>	<i>188,934</i>	<i>99,366</i>	<i>288,300</i>	<i>64,935</i>	<i>31,067</i>	<i>96,002</i>	<i>53,601</i>	<i>13,576</i>	<i>67,177</i>
Sites occupied by long-term guests	9,262	38,065	47,327	3,504	12,309	15,813	1,854	4,637	6,491
Other sites permanently reserved	41,330	2,474	43,804	21,902	1,257	23,159	14,425	405	14,830
Employment (persons)	5,867	3,827	9,694	1,891	1,227	3,118	1,487	510	1,997
SITE NIGHTS OCCUPIED ('000)									
<i>December quarter 1992</i>	<i>6,023.6</i>	<i>4,960.6</i>	<i>10,984.2</i>	<i>2,536.3</i>	<i>1,940.2</i>	<i>4,476.5</i>	<i>1,884.8</i>	<i>541.1</i>	<i>2,425.9</i>
<i>1993—</i>									
October	2,186.0	1,517.5	3,703.5	999.1	500.2	1,499.3	582.6	180.9	763.5
November	2,035.3	1,439.1	3,474.4	943.5	474.6	1,418.1	592.6	181.7	774.3
December	2,488.1	1,530.3	4,018.5	1,146.5	521.2	1,667.7	724.1	187.9	912.0
<i>December quarter 1993</i>	<i>6,709.4</i>	<i>4,486.9</i>	<i>11,196.3</i>	<i>3,089.1</i>	<i>1,496.0</i>	<i>4,585.1</i>	<i>1,899.3</i>	<i>550.4</i>	<i>2,449.8</i>
SITE OCCUPANCY RATES (per cent)									
<i>December quarter 1992</i>	<i>36.2</i>	<i>51.3</i>	<i>41.8</i>	<i>49.0</i>	<i>53.9</i>	<i>51.1</i>	<i>38.3</i>	<i>46.7</i>	<i>39.9</i>
<i>1993—</i>									
October	37.7	49.3	41.8	50.5	52.0	51.0	35.6	43.1	37.1
November	36.1	48.3	40.3	49.3	51.0	49.8	36.9	44.6	38.4
December	42.5	49.8	45.0	57.1	54.5	56.3	43.6	44.6	43.8
<i>December quarter 1993</i>	<i>38.8</i>	<i>49.1</i>	<i>42.4</i>	<i>52.4</i>	<i>52.5</i>	<i>52.4</i>	<i>38.7</i>	<i>44.1</i>	<i>39.8</i>
TAKINGS FROM ACCOMMODATION (\$'000)									
<i>December quarter 1992</i>	<i>55,023</i>	<i>47,313</i>	<i>102,335</i>	<i>23,777</i>	<i>18,804</i>	<i>42,580</i>	<i>12,975</i>	<i>5,193</i>	<i>18,168</i>
<i>1993—</i>									
October	19,470	15,649	35,119	8,465	5,316	13,781	3,940	1,802	5,742
November	17,055	14,443	31,497	7,473	4,856	12,329	3,930	1,806	5,736
December	25,153	16,735	41,888	12,029	5,990	18,018	5,598	2,020	7,618
<i>December quarter 1993</i>	<i>61,678</i>	<i>46,827</i>	<i>108,504</i>	<i>27,967</i>	<i>16,162</i>	<i>44,129</i>	<i>13,469</i>	<i>5,628</i>	<i>19,096</i>

See footnote at end of table.

TABLE 7 — CARAVAN PARKS BY TYPE AND BY STATE/TERRITORY, AUSTRALIA—continued

Particulars	Queensland			South Australia			Western Australia		
	Short-term	Long-term	Total	Short-term	Long-term	Total	Short-term	Long-term	Total
ESTABLISHMENTS, CAPACITY AND EMPLOYMENT									
<i>December quarter 1992—</i>									
Establishments	226	399	625	173	38	211	188	119	307
Capacity									
On-site vans	1,157	4,613	5,770	982	210	1,192	1,080	1,186	2,266
Other powered sites	10,631	21,817	32,448	12,374	2,439	14,813	10,437	8,204	18,641
Unpowered sites	8,492	5,235	13,727	5,919	835	6,754	3,905	2,005	5,910
Cabins, flats, etc.	1,083	2,194	3,277	1,187	361	1,548	819	494	1,313
<i>Total capacity</i>	<i>21,363</i>	<i>33,859</i>	<i>55,222</i>	<i>20,462</i>	<i>3,845</i>	<i>24,307</i>	<i>16,241</i>	<i>11,889</i>	<i>28,130</i>
Sites occupied by long-term guests	1,795	14,870	16,665	674	1,309	1,983	870	3,835	4,705
Other sites permanently reserved	515	676	1,191	1,343	31	1,374	1,566	584	2,150
Employment (persons)	774	1,428	2,202	630	144	774	653	409	1,062
<i>December quarter 1993—</i>									
Establishments	231	398	629	167	44	211	199	113	312
Capacity									
On-site vans	1,080	4,728	5,808	939	252	1,191	1,167	1,070	2,237
Other powered sites	10,792	21,835	32,627	11,994	2,836	14,830	11,657	7,391	19,048
Unpowered sites	8,390	5,413	13,803	5,736	1,046	6,782	4,005	1,900	5,905
Cabins, flats, etc.	1,207	2,237	3,444	1,256	389	1,645	838	564	1,402
<i>Total capacity</i>	<i>21,469</i>	<i>34,213</i>	<i>55,682</i>	<i>19,925</i>	<i>4,523</i>	<i>24,448</i>	<i>17,667</i>	<i>10,925</i>	<i>28,592</i>
Sites occupied by long-term guests	1,752	14,687	16,439	585	1,364	1,949	1,175	3,698	4,873
Other sites permanently reserved	684	502	1,186	1,467	29	1,496	1,974	259	2,233
Employment (persons)	811	1,372	2,183	593	156	749	696	388	1,084
SITE NIGHTS OCCUPIED ('000)									
<i>December quarter 1992</i>	<i>547.9</i>	<i>1,688.0</i>	<i>2,236.0</i>	<i>415.4</i>	<i>151.1</i>	<i>566.5</i>	<i>420.0</i>	<i>500.2</i>	<i>920.2</i>
<i>1993—</i>									
October	192.8	563.2	756.0	150.9	51.6	202.5	184.5	157.2	341.8
November	160.7	535.5	696.2	124.5	49.4	173.8	148.4	142.0	290.4
December	211.8	560.4	772.3	151.9	54.4	206.3	181.6	148.6	330.2
<i>December quarter 1993</i>	<i>565.4</i>	<i>1,659.1</i>	<i>2,224.5</i>	<i>427.3</i>	<i>155.4</i>	<i>582.7</i>	<i>514.5</i>	<i>447.8</i>	<i>962.3</i>
SITE OCCUPANCY RATES (per cent)									
December quarter 1992	28.0	54.2	44.1	22.1	42.7	25.3	28.1	45.7	35.6
<i>1993—</i>									
October	29.1	53.1	43.9	24.4	36.8	26.7	33.7	46.4	38.6
November	25.0	52.2	41.7	20.9	36.4	23.8	28.0	43.3	33.9
December	31.8	52.8	44.7	24.7	38.8	27.3	33.2	43.9	37.2
December quarter 1993	28.7	52.7	43.4	23.4	37.3	26.0	31.7	44.6	36.6
TAKINGS FROM ACCOMMODATION (\$'000)									
<i>December quarter 1992</i>	<i>6,230</i>	<i>15,642</i>	<i>21,873</i>	<i>5,167</i>	<i>1,348</i>	<i>6,515</i>	<i>4,839</i>	<i>5,020</i>	<i>9,859</i>
<i>1993—</i>									
October	2,354	5,381	7,735	1,890	505	2,396	2,062	1,842	3,904
November	2,045	4,986	7,031	1,492	489	1,982	1,482	1,619	3,101
December	2,553	5,611	8,165	1,987	554	2,541	2,252	1,785	4,037
<i>December quarter 1993</i>	<i>6,953</i>	<i>15,979</i>	<i>22,931</i>	<i>5,370</i>	<i>1,549</i>	<i>6,918</i>	<i>5,796</i>	<i>5,245</i>	<i>11,041</i>

See footnote at end of table.

TABLE 7 — CARAVAN PARKS BY TYPE AND BY STATE/TERRITORY, AUSTRALIA—continued

Particulars	Tasmania			Northern Territory			Australian Capital Territory (a)
	Short-term	Long-term	Total	Short-term	Long-term	Total	Total
ESTABLISHMENTS, CAPACITY AND EMPLOYMENT							
<i>December quarter 1992—</i>							
Establishments	56	11	67	55	24	79	5
Capacity							
On-site vans	288	119	407	91	238	329	n.p.
Other powered sites	2,785	488	3,273	2,392	1,846	4,238	n.p.
Unpowered sites	2,181	201	2,382	4,938	711	5,649	n.p.
Cabins, flats, etc.	295	79	374	138	73	211	n.p.
<i>Total capacity</i>	<i>5,549</i>	<i>887</i>	<i>6,436</i>	<i>7,559</i>	<i>2,868</i>	<i>10,427</i>	<i>n.p.</i>
Sites occupied by long-term guests	245	147	392	139	937	1,076	n.p.
Other sites permanently reserved	742	77	819	5	1	6	n.p.
Employment (persons)	178	36	214	279	99	378	n.p.
<i>December quarter 1993—</i>							
Establishments	56	12	68	55	25	80	5
Capacity							
On-site vans	274	120	394	65	249	314	150
Other powered sites	2,782	524	3,306	2,553	1,902	4,455	495
Unpowered sites	2,083	240	2,323	3,127	785	3,912	419
Cabins, flats, etc.	306	96	402	147	72	219	10
<i>Total capacity</i>	<i>5,445</i>	<i>980</i>	<i>6,425</i>	<i>5,892</i>	<i>3,008</i>	<i>8,900</i>	<i>1,074</i>
Sites occupied by long-term guests	210	195	405	182	871	1,053	304
Other sites permanently reserved	875	17	892	3	5	8	—
Employment (persons)	183	41	224	206	89	295	44
SITE NIGHTS OCCUPIED ('000)							
<i>December quarter 1992</i>	<i>135.7</i>	<i>32.4</i>	<i>168.1</i>	<i>83.6</i>	<i>107.6</i>	<i>191.2</i>	<i>n.p.</i>
<i>1993—</i>							
October	45.7	10.2	55.9	30.4	37.1	67.5	17.1
November	46.3	9.0	55.3	19.3	33.6	52.9	13.3
December	56.2	10.4	66.5	16.0	32.1	48.1	15.4
<i>December quarter 1993</i>	<i>148.2</i>	<i>29.5</i>	<i>177.7</i>	<i>65.7</i>	<i>102.8</i>	<i>168.5</i>	<i>45.8</i>
SITE OCCUPANCY RATES (per cent)							
<i>December quarter 1992</i>	<i>26.6</i>	<i>39.7</i>	<i>28.4</i>	<i>12.0</i>	<i>40.8</i>	<i>19.9</i>	<i>n.p.</i>
<i>1993—</i>							
October	27.1	33.5	28.0	16.6	39.8	24.5	51.3
November	28.4	30.6	28.7	10.9	37.2	19.8	41.4
December	33.3	34.1	33.4	8.7	34.5	17.4	46.3
<i>December quarter 1993</i>	<i>29.6</i>	<i>32.7</i>	<i>30.1</i>	<i>12.1</i>	<i>37.1</i>	<i>20.6</i>	<i>46.4</i>
TAKINGS FROM ACCOMMODATION (\$'000)							
<i>December quarter 1992</i>	<i>1,126</i>	<i>320</i>	<i>1,446</i>	<i>909</i>	<i>986</i>	<i>1,895</i>	<i>n.p.</i>
<i>1993—</i>							
October	318	126	444	440	370	811	305
November	353	131	484	280	331	610	225
December	504	157	661	229	318	548	300
<i>December quarter 1993</i>	<i>1,174</i>	<i>415</i>	<i>1,589</i>	<i>949</i>	<i>1,019</i>	<i>1,969</i>	<i>831</i>

(a) Data for A.C.T. caravan parks for periods prior to March quarter 1993 are not separately available and are included with data for N.S.W. caravan parks.

TABLE 8 — VISITOR HOSTELS BY STATE/TERRITORY, AUSTRALIA

Particulars	Australia	New South Wales (a)	Victoria	Queensland	South Australia	Western Australia	Tasmania	Northern Territory
ESTABLISHMENTS, CAPACITY AND EMPLOYMENT								
<i>December quarter 1992—</i>								
Establishments	405	77	44	121	40	49	38	36
Bed spaces	25,404	5,137	2,701	7,862	1,992	3,060	1,334	3,318
Employment (persons)	1,497	277	146	549	134	140	88	163
<i>December quarter 1993—</i>								
Establishments	414	78	45	118	42	54	38	39
Bed spaces	24,960	5,026	2,576	7,863	2,037	2,993	1,471	2,994
Employment (persons)	1,508	300	150	543	123	138	94	160
GUEST NIGHTS ('000)								
<i>December quarter 1992</i>	996.5	262.1	91.8	354.0	55.1	96.0	17.5	119.9
<i>1993—</i>								
October	321.8	78.4	27.2	112.8	17.6	35.2	3.8	46.9
November	323.4	83.1	31.5	110.6	20.9	32.9	6.0	38.3
December	344.1	97.3	34.0	115.9	20.8	35.6	9.2	31.4
<i>December quarter 1993</i>	989.3	258.7	92.7	339.2	59.3	103.8	18.9	116.6
BED OCCUPANCY RATES (per cent)								
<i>December quarter 1992</i>	43.1	55.5	36.9	49.0	30.0	34.1	14.4	42.4
<i>1993—</i>								
October	41.8	51.1	34.1	46.4	27.9	38.0	8.3	50.5
November	43.4	55.9	40.8	47.1	34.2	36.7	13.6	42.7
December	44.5	62.5	42.6	47.7	32.9	38.5	20.1	33.8
<i>December quarter 1993</i>	43.2	56.5	39.1	47.1	31.6	37.7	14.0	42.3
GUEST ARRIVALS ('000)								
<i>December quarter 1992</i>	358.1	71.6	32.9	126.7	28.0	35.0	12.9	51.1
<i>1993—</i>								
October	118.5	23.3	10.4	40.8	8.7	12.7	2.8	19.8
November	119.6	23.2	12.6	40.9	9.5	12.0	4.4	17.0
December	126.2	26.8	13.7	42.8	9.5	13.2	6.3	13.9
<i>December quarter 1993</i>	364.3	73.3	36.7	124.6	27.6	37.9	13.4	50.8
AVERAGE LENGTH OF STAY (days)								
<i>December quarter 1992</i>	2.8	3.7	2.8	2.8	2.0	2.7	1.4	2.3
<i>1993—</i>								
October	2.7	3.4	2.6	2.8	2.0	2.8	1.4	2.4
November	2.7	3.6	2.5	2.7	2.2	2.7	1.4	2.3
December	2.7	3.6	2.5	2.7	2.2	2.7	1.5	2.3
<i>December quarter 1993</i>	2.7	3.5	2.5	2.7	2.1	2.7	1.4	2.3
TAKINGS FROM ACCOMMODATION (\$'000)								
<i>December quarter 1992</i>	11,578	3,197	1,168	3,945	558	997	204	1,510
<i>1993—</i>								
October	3,745	1,020	326	1,236	182	353	44	583
November	3,858	1,101	395	1,234	229	348	69	480
December	4,092	1,284	423	1,311	227	372	102	373
<i>December quarter 1993</i>	11,694	3,406	1,144	3,782	638	1,073	215	1,436

(a) Including Australian Capital Territory establishments.

EXPLANATORY NOTES

INTRODUCTION

1 This publication contains data, for Australia and each State and Territory, from a quarterly survey of tourist accommodation establishments. The period covered by the latest survey is the 3 months ended 31 December 1993.

SCOPE

2 Tourist accommodation establishments currently included in the survey comprise two groups:

- Establishments which provide predominantly short-term accommodation (i.e. for periods of less than 2 months) to the general public. These include:

Hotels, motels and guest houses, with facilities being hotels licensed to operate a public bar and motels, private hotels and guest houses all of which provide a bath (or shower) and toilet in most guest rooms and have breakfast available for guests.

NOTE: From December quarter 1993, hotel, motel and guest house establishments with fewer than five rooms have been formally excluded from the scope of this statistical collection. It had been recognised that coverage of these very small establishments was incomplete, and was difficult to achieve and maintain. This change in scope resulted in the exclusion of 95 establishments which in the September quarter 1993 Survey aggregates for Australia represented 1.9 per cent of hotel, motel and guest house establishments but accounted for only 0.2 per cent of accommodation capacity and less than 0.1 per cent of occupancy and takings.

Holiday flats, units and houses (excluding establishments predominantly operated on a time share basis) which are operated by owners or managers who have sole letting rights to at least five flats, units or houses or by real estate agents for short-term letting. They are mainly self-contained in terms of cooking, bath (or shower) and toilet facilities and do not have breakfast available for guests. Data for holiday flats, units and houses include short-term owner occupation as well as paying guest occupation.

Visitor hostels which provide accommodation to visitors on a bed basis (rather than by the room). This category does not include establishments providing charity type accommodation (e.g. Salvation Army hostels) nor hotels, motels and guest houses without in-room facilities which provide accommodation on a per room basis.

- *Caravan parks* which provide either predominantly short-term (i.e. for periods of less than 2 months) or predominantly long-term (i.e. for periods of 2 months or more) accommodation to the general public and which provide powered sites for caravans and toilet, shower and laundry facilities for guests.

3 Data collected and published for each type of establishment (other than holiday flats, units and houses) include both long-term and short-term guests at these establishments.

4 Establishments which provide more than one type of accommodation (e.g. a motel with attached caravan park) are treated as two or more separate establishments. However, self-contained units, flats, cabins, etc. attached to hotels, motels or to caravan parks are included in the capacity for those establishments and not treated as separate holiday flat, unit or house establishments.

DEFINITIONS

5 *Number of establishments.* For hotels, motels and guest houses, caravan parks and visitor hostels, the number of establishments within the scope of the survey which operated for any part of the survey period, or which closed temporarily for the quarter for seasonal reasons.

6 *Number of letting entities.* For holiday flats, units and houses, the number of owners, managers or real estate agents within the scope of the survey who operated for any part of the survey period.

7 Capacity in terms of *Guest rooms, Bed spaces, Holiday units or Caravan park sites, etc.* is the maximum number available to accommodate paying guests during the survey period. Capacity closed temporarily for seasonal reasons is included.

EXPLANATORY NOTES—continued

DEFINITIONS—continued

8 *Bed spaces.* Three-quarter beds are counted as one bed space; double beds as two bed spaces. Cots are excluded.

9 *Total caravan park capacity* comprises *On-site vans, Other powered sites, Unpowered sites* and *Cabins, etc.*

10 *Room nights available.* The number of guest rooms available multiplied by the number of days for which they were available during the survey period. Includes operating periods only for establishments closing (other than for seasonal reasons) or opening during the survey period.

11 Occupancy in terms of *Room nights, Unit nights* or *Site nights occupied* refers to the total number of nights each guest room, holiday unit or caravan park site, etc. was occupied during the survey period.

NOTE: From September quarter 1992, caravan park sites, etc. permanently reserved for 2 months or more at the end of the survey period but only casually occupied by their tenants have been recorded continuously as *Site nights occupied* irrespective of whether the tenants of individual sites were in residence on any particular night. (See also paragraph 14 below). Previously, usage of these sites was recorded as *Site nights occupied* only when their tenants were in the park. Total site occupancy rates from September quarter 1992 are therefore not comparable with those from previous quarters.

12 Occupancy in terms of *Guest nights* refers to the total number of nights each paying guest stayed during the survey period.

13 *Sites occupied by long-term guests.* The total number of sites, etc. occupied at the end of the survey period by guests who have stayed continuously for 2 months or more.

14 *Other sites permanently reserved.* The total number of powered and unpowered sites, on-site vans and cabins, etc. continuously let for 2 months or more by the end of the survey period to tenants who occupy the sites only on a casual or sporadic basis. Separate data for this item are available only from September quarter 1992.

15 *Occupancy rates* represent occupancy expressed as a percentage of total capacity available during the survey period - e.g.

Room occupancy rate (%) for the period =

$$\frac{\text{Room nights occupied}}{(\text{Guest rooms}) \times (\text{No. of days in the period})} \times 100$$

providing that, for establishments closing (other than for seasonal reasons) or opening during the survey period, the denominator of the above expression includes only operating periods.

16 *Guest arrivals.* The total number of paying guests counted only on the first night they stayed at the accommodation establishment.

17 *Unit lettings.* The total number of times a holiday flat, unit or house was occupied by a new tenant, counted only on the first night it was occupied by the new tenant.

18 *Average length of stay* is expressed in number of days and calculated:

- for hotels, motels and guest houses and for visitor hostels, by dividing *Guest nights* by *Guest arrivals* and
- for holiday flats, units and houses, by dividing *Unit nights occupied* by *Unit lettings*.

19 *Takings from accommodation.* Revenue received from the provision of accommodation. Takings from meals are excluded. Takings from accommodation for each month generally represent the takings received during that month. Where payments are received in advance of, or after, the provision of accommodation to guests, the monthly figure for takings from accommodation may not necessarily bear a direct relationship to the number of guests accommodated during the month. Rental and storage

EXPLANATORY NOTES —continued

fees paid to caravan parks for the keeping of private vans in parks are included in the takings of the month they are received.

DEFINITIONS —continued

20 *Star grading.* The grading of hotels and motels with facilities based on the classification system used by members of the Australian Automobile Association (AAA). The gradings are allocated according to a points system based on the amenities and facilities available to guests. Details of the grading scheme are contained in the RACV-RAASA members' publication *Accommodation Australia*, or the individual tour guides produced by members of the AAA. For the purpose of classifying establishments to a star grading in this publication, 'half' star gradings are ignored (e.g. a two and a half star grading has been shown as two star).

21 *Employment.* The number of persons working at accommodation establishments at the end of the survey period (including working proprietors and those working on other than accommodation activities).

UNPUBLISHED STATISTICS

22 The ABS may make available on request certain unpublished tourist accommodation statistics. A charge may be made for this information.

RELATED PUBLICATIONS

23 Publications for Australia, and each State and Territory, are released by the respective offices of the ABS. Tourist accommodation statistics for past quarters are available on request.

24 Other ABS publications which may be of interest include:

Tourist Accommodation Atlas of Queensland, 1991 (8645.3) (irregular)

Directory of Tourism Statistics, 1991 (1130.0) (irregular)

Overseas Arrivals and Departures, Australia (3401.0) (monthly)

Selected Accommodation Establishments, Australia, 1984-85 (8636.0) (irregular)

25 Current publications produced by the ABS are listed in the *Catalogue of Publications and Products*, (1101.0). The ABS also issues the *Publications Advice* (1105.0) on Tuesdays and Fridays which lists publications to be released in the next few days. Both the *Catalogue* and *Publications Advice* are available from any ABS office.

SYMBOLS AND OTHER USAGES

n.a. not available
n.p. not available for publication but included in totals where applicable
r figure or series revised since previous issue
.. not applicable
— nil or rounded to zero (including null cells)

26 Where figures have been rounded, discrepancies may occur between totals and the sums of the component items.

ELECTRONIC SERVICES

DISCOVERY. Key *656# for selected current economic, social and demographic statistics.

PC-AUSSTATS. Thousands of up-to-date time series are available on this ABS on-line service. For further information, phone the PC-AUSSTATS Help Desk on (06) 252 6017.

TELESTATS. This service provides:

- foreign trade statistics tailored to users' requirements. Further information is available on (06) 252 5404
- text and tables for selected Main Economic Indicator publications. Further information is available on (06) 252 5405.

FLOPPY DISK SERVICE

Selected ABS statistics are available on floppy disk. Further information is available on (06) 252 6684.

RICHARD MADDEN
Acting Australian Statistician





For more information ...

The ABS publishes a wide range of statistics and other information on Australia's economic and social conditions. Details of what is available in various publications and other products can be found in the *ABS Catalogue of Publications and Products* available at all ABS Offices (see below for contact details).

Information Consultancy Service

Information tailored to special needs of clients can be obtained from the Information Consultancy Service available at ABS Offices (see Information Inquiries below for contact details).

National Dial-a-Statistic Line

0055 86 400

(Steadycom P/L: premium rate 25c/21.4 secs.)

This number gives 24-hour access, 365 days a year for a range of statistics.

Electronic Data Services

Selections of most frequently requested statistics are available, updated daily, on DISCOVERY (Key *656#). For more details on electronic data services available, contact Information Services in any of the ABS Offices (see Information Inquiries below for contact details).

Bookshops and Subscriptions

There are over 400 titles of various publications available from ABS bookshops in all ABS Offices (see below Bookshop Sales for contact details). The ABS also provides a subscription service through which nominated publications are provided by mail on a regular basis at no additional cost (telephone Publications Subscription Service toll free on 008 02 0608 Australia wide).

Sales and Inquiries

Regional Offices	Information Inquiries	Bookshop Sales
SYDNEY (02)	268 4611	268 4620
MELBOURNE (03)	615 7000	615 7829
BRISBANE (07)	222 6351	222 6350
PERTH (09)	323 5140	323 5307
ADELAIDE (08)	237 7100	237 7582
HOBART (002)	20 5800	20 5800
CANBERRA (06)	207 0326	207 0326
DARWIN (089)	43 2111	43 2111
National Office		
ACT (06)	252 6007	008 020 608

ABS Email Addresses

Keylink	STAT.INFO/ABS
X.400	(C:AU,A:TELMEMO,O:ABS,SN:INFO,FN:STAT)
Internet	STAT.INFO@ABS. TELEMEMO.AU



Information Services, ABS, PO Box 10, Belconnen ACT 2616

